

TEXAS HEREFORD

The Official Publication of the Texas Hereford Association

February 2026



4th Annual

GKB CATTLE & BARBER RANCH SPRING BULL SALE *in Desdemona*

THURSDAY, MARCH 19, 2026

12 noon at the GKB Sale Headquarters, Desdemona, Texas

Selling 105 FALL LONG YEARLING BULLS...READY FOR SERVICE

90 Hereford Bulls...Homozygous Polled, Polled & Horned • 15 Angus Bulls

Each buyer will be entered in a drawing to win a custom built trailer from Hughes Trailers, Canyon, TX!

Sons of these outstanding herd sires sell:



C GKB GUARDIAN 1015 ET
P44257548



BR GKB WINCHESTER 1314
44300997



BR TRENDING K014 ET
P44350482



BR GENESIS J005 ET
P44223221



Established 1987

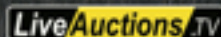


Gary & Kathy Buchholz, owners
Gary Buchholz (214) 537-1285
Jay Creamer (254) 707-2199
Raymond Gushee (207) 256-7365
7440 TX 16, Desdemona, TX 76445
gkbcattle.com



One Family One Passion. Since 1954

Brett Barber (806) 681-2457
Justin Barber (806) 681-5528
Terri Barber (806) 727-6107
Jacob Toombs (417) 399-0738
Dale & Mary Barber
office@barberranch.com
10175 FM 3138, Channing, TX 79018
barberranch.com



*Catalog online and mailed on request. Please contact the sale manager:
Videos online prior to sale day.*



Dustin N. Layton (405) 464-2455
laytond@yahoo.com
Chiselm Kinder (405) 747-4683
laytonauction.com

25*

OFFERING

Our Best

BULLS



Photo by P. Burgett

Look for Rocking Chair Bulls at these Sales...

San Antonio All Breed Bull and Female Sale, Wednesday, February 18, 2026

Houston All Breed Bull and Female Sale, Wednesday, March 4, 2026

Bred Heifers also Available!

Rocking Chair Ranch



A 70-day spring and fall calving season, provides a year round inventory of Rocking Chair raised bulls.

Backed by a cowherd with Genomically Enhanced EPDs.

Bulls come with performance data, EPD's, and ultrasound information.

Fertility tested and guaranteed.

www.therockingchairranch.com

Loyd Whitehead, Owner

John Tolbert, Manager • 325-396-4911
sales@rockingchairranch.net



Rocking Chair Ranch

5749 Rocking Chair Lane
Ft. McKavett, TX 76841



Annual *Spring* Hereford Bull and Female Sale

FRIDAY, APRIL 10, 2026

12:30 p.m. | at the ranch, Morgan, Texas

Join us for...

- 65 2-year-old Hereford Bulls
- 100 Registered Hereford Females
Bred to Hereford Bulls
- 60 Registered Hereford Females
Bred to Angus Bulls
- 20 Commercial Hereford Females
Bred to Angus Bulls
- 20 Black Baldy Females
Bred to Angus to calve in fall



Jeff Chaffin, Ranch Manager
Joe Walker & Joey Walker, Owners
Ranch Office: (254) 635-4444
Ranch Fax: (254) 635-7201
P. O. Box 9 | Morgan, Texas 76671
www.w4ranch.com

Sale Manager

JOHNSON
CATTLE MARKETING

Tom Johnson
440 FM 246 • Wortham, Texas 76693
(817) 291-5121 • johnsoncattlemarketing@gmail.com

Sale Broadcast on **LiveAg**

COOPER HEREFORD RANCH

60TH *Annual Production Sale*
at the ranch, 1/2 mile south of Willow Creek, MT

3.10.26

Tuesday

Selling 90 YEARLING BULLS
25 YEARLING HEIFERS



Rooted in
PERFORMANCE

Focused on
MATERNAL

the **CLI** advantage



LiveAuctions.TV



514

HH 3027L x CL1 988G: Balanced numbers & phenotype! #44655903



524

HH 3044 x CL1 113J: Elite calving ease prospect! #44664097



535

CL1 381L x CL1 3105L: STUD!! Checks ALL the boxes! #44656001



581

HH 3044L x CL1 6162D: Elite Maternal + Fertility #44664074



5121

HH 3044 x CL1 280K: Calving Ease + Elite Carcass! #44664118



5228

HH 3027L x CL1 1189J: STUD!! Top 15% in 12 traits!! #44655981

www.cooperherefords.com

Mark Cooper (406) 539 - 6885 • Dave Hanson (406) 570 - 5519

D

DOYLE HEREFORD RANCH ANNUAL SPRING BULL & FEMALE SALE

SATURDAY, MARCH 7, 2026

12 NOON CST • WOLFE CITY, TEXAS

67 Registered Hereford Lots Sell

57 Bulls *Horned & Polled*

10 Open Spring Yearling Females



DHR BENTLEY X51 TRUST 525

P44682635 • 3/1/25 • Polled

PCR X51 Bentley 454B x CL 1 Domino 105Y
Outstanding growth and maternal.

CED +1.8, BW +4.9, WW +77, YW +123, MILK +22,
REA +1.00, MARB +.19, BMI +432, BII +529, CHB +157



DHR 269 L1 DOMINO 516

P44660608 • 1/18/25 • Polled

H5 9241 Advance 269 x KCF Bennett Encore Z311 ET
Top 1% for growth and top 4% for CHB.

CED +1.5, BW +5.2, WW +81, YW +132, MILK +36,
REA +.71, MARB +.40, BMI +368, BII +481, CHB +177



DHR GUARDIAN FINA TEST 4139 ET

P44617510 • 11/16/24 • Homozygous Polled

C GKB Guardian 1015 ET x F Final Test 722
Tremendous growth, maternal and marbling.

CED +2.0, BW +3.2, WW +73, YW +108, MILK +31,
REA +.30, MARB +.62, BMI +469, BII +596, CHB +171



DHR PINPOINT 215Z DOMINO 4130

44611540 • 10/10/24 • Horned

SR Pinpoint 252K x F 215Z Domino 721
Big spread Pinpoint son.

CED +2.5, BW +3.2, WW +62, YW +106, MILK +32,
REA +.34, MARB +.27, BMI +309, BII +397, CHB +122



DHR PINPOINT 215Z DOMINO 4131

44611541 • 10/12/24 • Horned

SR Pinpoint 252K x F 215Z Domino 620
Rugged growth bull with pigment.

CED -0.3, BW +3.3, WW +63, YW +113, MILK +32,
REA +.35, MARB +.21, BMI +241, BII +322, CHB +129



DHR STARDANCE BELLE AIR 4119

44610587 • 9/22/24 • Horned

Stardance M8086 ET x BR Belle Air 6011
*Calving ease with growth and top tier marbling.
Six traits in the top 1% of the breed!*

CED +8.1, BW +1.2, WW +59, YW +96, MILK +49,
REA +.53, MARB +.92, BMI +548, BII +684, CHB +197

Catalogs mailed on request & available for viewing on our website. Videos online prior to sale day at LiveAuctions.TV



DOYLE HEREFORD RANCH

Mike Doyle (214) 240-4538

mike@acecreditconsulting.com

Landon Doyle (817) 501-7177

9545 St. Hwy. 34N, Wolfe City, TX 75496

doyleherefordranch.com



SALE MANAGER:

Dustin N. Layton (405) 464-2455

laytond@yahoo.com

Chisolm Kinder (405) 747-4683

laytonauction.com





Winter's Wrath plus Dedication

by Diane Johnson | Editor | Manager

I am not a big fan of cold weather. In fact, I dislike it so much that I refuse to complain in August, no matter how tired I get of the heat. When it's hot in the summer, you won't hear me grumble—I know I'd rather take the warmth over what winter has in store.

As I write this, the United States is facing a massive winter storm stretching 2,000 miles and affecting 172 million people over several days. The storm dominated the news as it approached, leaving everyone waiting to see how bad it would get. Now that it has arrived, we're all just anxious for it to leave.

Unfortunately, the junior heifer exhibitors at the Fort Worth Stock Show and Rodeo were hit hard by the storm. I was there the day before the shows were to start on Saturday. The temperature was a brisk 34 degrees—the highest it would be for the next five days and just as the forecasters predicted. Even while walking through the warmest barn (if you know, you know), it still felt unbearably cold. I realized that night, as I headed home, that it might be my last chance to get out of the house for several days.

Saturday morning brought ice and sleet, but the young exhibitors persevered. Despite the harsh conditions, they showed their cattle with incredible dedication, caring for their animals without complaint—well, mostly.

Of course, the cold affects more than just the stock show. Ranchers have to deal with breaking ice, assisting heifers that calve early, sometimes in the middle of the night or with many other situations. I remember my own experiences clearly—my father would remind me at 10 PM that it was time to check on the heifers, even when it was freezing outside. Those memories of braving the cold are still vivid.

By the time you read this, the annual meeting, PowerHouse Commercial Heifer sale, National Hereford Show, and all the associated honors will have already taken place. It's always an exciting season for our breed. *(Watch for full coverage in the March issue)*

Now, for a funny story. I live in a neighborhood on a slight hill in North Ridglea (in Fort Worth, just four miles from

(continued on page 36)



Fun photo courtesy of Clint Tunnell, Eoff Farms, Blanket, Texas.

SCHMIDT HEREFORD RANCH
 Registered Herefords Since 1948
 Registered Herefords | Angus-Hereford Black Baldies | Spanish Goats
 JK Schmidt 972-921-8281 | jkschmidt1019@gmail.com | 14273 SR Ranch Road | Mason, Texas 76856

Family. Tradition. Quality.



46TH ANNUAL PRODUCTION SALE
MONDAY, FEBRUARY 23, 2026
12:30 PM AT THE RANCH IN BRUNEAU, IDAHO



LOT 52
 AHA 44650425
 DOB 1/12/25
 CED 8.9
 BW -0.2
 WW 68
 YW 105
 MM 39
 REA 0.60
 MARB 0.25
 CHB 127

C REIGN MAKER 5166

This young herd sire provides excellent maternal qualities and calving ease, matching any others available. He will join our Denver pen in 2026.



LOT 13
 AHA 44650297
 DOB 1/5/25
 CED 2.6
 BW 51
 WW 66
 YW 100
 MM 46
 REA 0.69
 MARB 0.44
 CHB 178

C 1262 ARLO 5018 ET

A big massive strong topped bull that is eye appealing at every angle. With his phenotype and EPD profile, he has serious herd bull potential.



LOT 48
 AHA 44650410
 DOB 1/7/25
 CED 9.7
 BW 13
 WW 70
 YW 109
 MM 52
 REA 0.35
 MARB 0.42
 CHB 151

C CUDA BELLE 5152

This bull presents an excellent choice as a calving ease herd sire, originating from a first-calf heifer sired by Guardian.



LOT 15
 AHA 44650303
 DOB 1/30/25
 CED 4.3
 BW 1.7
 WW 71
 YW 105
 MM 26
 REA 1.09
 MARB 0.52
 CHB 186

C 79H DOMINO 5024 ET

A top maternal bull with impressive stats, and a 1/2 brother to last year's highest seller.



LOT 18
 AHA 44650308
 DOB 1/23/25
 CED 3.4
 BW 4.1
 WW 73
 YW 124
 MM 43
 REA 0.96
 MARB 0.27
 CHB 178

C LEGION 5030

One of the first sons of Legion to sell. He's one of the real attractive bulls in the sale with loads of pigment.



LOT 43
 AHA 44650400
 DOB 1/22/25
 CED 4.3
 BW 4.0
 WW 88
 YW 139
 MM 30
 REA 0.91
 MARB 0.33
 CHB 130

C REIGN MAKER 5141

We believe he is among the best herd sire prospects we've ever presented. He embodies all aspects of our program, being backed by generations of top-performing cow families.



LOT 14
 AHA 44650299
 DOB 1/15/25
 CED 4.7
 BW 2.8
 WW 76
 YW 126
 MM 37
 REA 0.80
 MARB 0.39
 CHB 185

C 8140 LEGION 5020 ET

This is a bull that is undoubtedly right for the times and a genuine herd bull prospect in every way. When you consider his numbers, it's impressive to see a bull with his stats that still maintains the phenotype suited for the future.



LOT 83
 AHA 44670222
 DOB 8/15/24
 CED -5.2
 BW 3.5
 WW 75
 YW 105
 MM 42
 REA 0.95
 MARB 0.50
 CHB 190

C 1030 DENALI 4367 ET

His outstanding CHB values combined with his BMI make him an exceptional breeding prospect. He brings together several of the leading cow families in our program.



LOT 87
 AHA 44671895
 DOB 9/15/24
 CED 6.4
 BW 1.7
 WW 69
 YW 109
 MM 36
 REA 0.67
 MARB 0.31
 CHB 117

C 2138 CUDA BELLE 4322 ET

Produced by donor dam 2138, who is valued at \$195,000. He has pigmentation and coloring, paired with a strong set of performance values and phenotype.



5105B COLYER ROAD • BRUNEAU, ID 83604
 208-845-2313 • GUY CELL: 208-599-0340 • KYLE CELL: 208-250-3924
 GUY@HEREFORD.COM • WWW.HEREFORD.COM

SELLING 250

HORNED HEREFORD, POLLED HEREFORD AND ANGUS BULLS & 45 FEMALES
BULLS DEVELOPED FOR THE COMMERCIAL CATTLE INDUSTRY. BREED LEADING EPDS
AND PERFORMANCE FOR THOSE SELLING CATTLE BY THE POUND.

VIEW & BID ON LIVEAUCTIONS.TV



Ever noticed, solid genetics look triangular.

SELLING IN SAN ANTONIO STOCKSHOW BULL SALE | FEBRUARY 18



OHT 145 KING DOMINO 404 [EF] #44544497 ▶ 03/09/2024

CE	BW	WW	YW	DMI	SC	SCF	MM	MG	MCE
+6.7	+2.2	+49	+89	+0.2	+1.6	+18.8	+33	+58	+5.3
MCW	UDDR	TEAT	CW	FAT	REA	MARB	BMI	BII	CHB
+61	+1.30	+1.30	+59	+0.004	+0.30	+0.16	+\$379	+\$449	+\$115



OHT 145 KING DOMINO 412 #44544506 ▶ 03/18/2024

CE	BW	WW	YW	DMI	SC	SCF	MM	MG	MCE
+8.8	+0.9	+48	+81	+0.1	+2.2	+18.1	+33	+57	+6.8
MCW	UDDR	TEAT	CW	FAT	REA	MARB	BMI	BII	CHB
+72	+1.20	+1.30	+53	+0.014	+0.15	+0.13	+\$357	+\$425	+\$98



Selling Open Yearling Heifers (5 each) In Beeville & San Antonio.
Partial offering shown here.

SELLING IN HOUSTON LIVESTOCK SHOW ALL BREED BULL SALE | MARCH 4



OHT 9218 SUSTAINING RANGE 410 [DBP] #44544504 ▶ 03/16/2024

CE	BW	WW	YW	DMI	SC	SCF	MM	MG	MCE
+0.2	+3.8	+58	+100	+0.5	+1.0	+18.0	+33	+62	+2.1
MCW	UDDR	TEAT	CW	FAT	REA	MARB	BMI	BII	CHB
+89	+1.20	+1.20	+85	+0.064	+0.66	+0.07	+\$388	+\$461	+\$128



OHT 145 CONCHO PRINCE DOM 402 #44538709 ▶ 03/01/2024

CE	BW	WW	YW	DMI	SC	SCF	MM	MG	MCE
+1.4	+3.9	+66	+104	+0.7	+2.1	+18.1	+33	+66	+3.3
MCW	UDDR	TEAT	CW	FAT	REA	MARB	BMI	BII	CHB
+80	+1.30	+1.40	+61	+0.024	+0.22	+0.16	+\$356	+\$444	+\$97



OHT 814 CASE SENSATION 407 #44544501 ▶ 03/10/2024

CE	BW	WW	YW	DMI	SC	SCF	MM	MG	MCE
-3.2	+5.6	+57	+102	+0.5	+1.3	+15.8	+36	+64	-1.0
MCW	UDDR	TEAT	CW	FAT	REA	MARB	BMI	BII	CHB
+91	+1.10	+1.10	+59	+0.004	+0.17	+0.18	+\$331	+\$410	+\$109

Providing several chances to improve your herd with O H Triangle power and maximize what you can do in this outstanding market.



POWERFUL OPPORTUNITIES OFFERED STATEWIDE

- February 7** South Texas Hereford Association Spring Sale
Selling 7 Bulls and 5 Open Heifers
- February 19** San Antonio Livestock Show and Rodeo All Breeds Bull Sale
Selling 2 Bulls and 5 Open Heifers
- March 4** Houston Livestock Show and Rodeo All Breeds Bull Sale
Selling 3 Bulls
- March 28** Karnes City Auctions' Special Replacement Sale
Selling 2 Registered Bulls



O H TRIANGLE RANCH



O H Triangle Ranch
Office 325-655-4486

IRION COUNTY, TEXAS

36 W Beauregard Ave., Suite 616 • San Angelo, TX 76903
Ryan Akers | Ranch Manager • Cell 805-709-2289
OHTranch@ohtriangleranch.com



Like Us On
facebook f
Follow us on social media
@ohtriangleranch

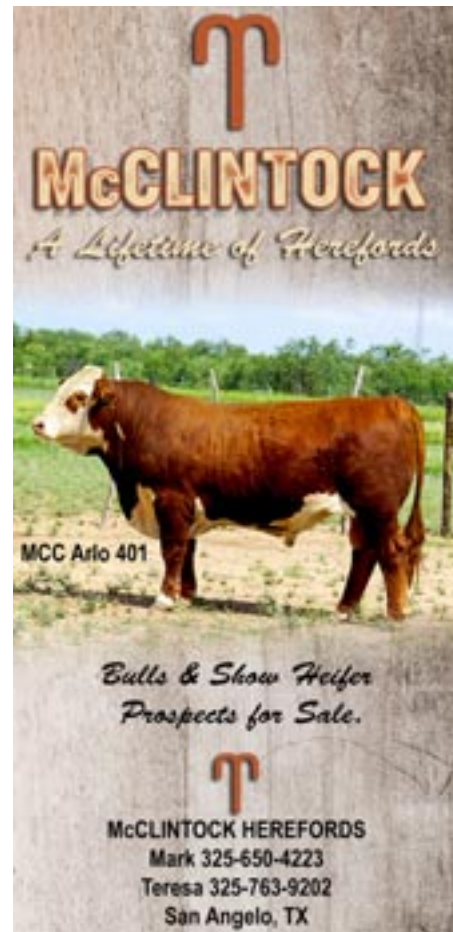
Measurement, Management — and Momentum

Zoetis' INHERIT Select Now Available in CattleMax for Smarter Ranching

DATA HAS ALWAYS BEEN IMPORTANT at Genesis Enterprises. Now, it's also easy.

For Genesis, this progress marks a new milestone for commercial cattle producers: INHERIT Select® genomic testing from Zoetis is now available directly within CattleMax software, bringing genomic Expected Progeny Differences (EPDs) into one of the most widely used cattle management software platforms in North America.

With the most discerning consumer in mind, the central Oklahoma ranch breeds Angus and Red Angus females to



Wagyu bulls. Soon, the calves will supply Genesis' branded beef program. With such lofty goals, owners Steve and Betty Orr know knowledge is power.

And their ranch manager, Jason Shepard, agrees. By harnessing INHERIT Select genomic testing — now seamlessly integrated into CattleMax software — he is making informed breeding and culling decisions that promise to boost productivity and profitability.

INHERIT Select, a genetic test and weekly multibreed genetic evaluation for commercial cow/calf producers, provides genomic Expected Progeny Differences, or genomic EPDs, and predictions that help commercial cattle producers make more profitable selection and breeding decisions while harnessing the power of hybrid vigor. Backed by more than 1.4 million straightbred and crossbred animals, it was just what Genesis needed.

It all began when Steve came to Jason and said he wanted to learn more about their commercial cow herd.

"He's passionate about data collection and how we can further use those resources to better our end product," the cattleman recalls.

They talked with Dan Ellis, genetics consultant for Zoetis, about INHERIT Select and decided to give it a shot. And, in doing so, became beta testers for the product's integration into CattleMax, a cattle management software system Genesis has used almost 10 years.

Genesis tested about 800 commercial cows and received genomic EPDs for traits like weaning weight, yearling weight, and carcass quality — insights once exclusive to registered cattle.

The results transformed their approach, enabling Shepard to "cull with more efficiency and more knowledge" by pinpointing superior females, as well as those that weren't meeting the mark.

"It's going to be a game changer when it comes to our commercial cow herd," he says.

Previously, mating decisions were a shot in the dark, he says. Now, Shepard pairs cows excelling in growth traits with

bulls strong in carcass merits, optimizing the next generation.

INHERIT's integration with CattleMax makes this data actionable. After a swift upload process, Shepard can generate spreadsheets within the platform to compare EPD profiles and

“We at Gruben Cattle Co. focus on a premium blend of both seedstock and clubby genetics in an effort to produce elite show steers and donor prospects. Cattle are available to view anytime by appointment, and will be sold by private treaty beginning March 1.”



Gruben Cattle Co.
Clancey Gruben | 325-574-3203
5968 CR 242 | Snyder, TX 79549
Facebook Gruben Cattle Co

(continued on page 12)



February 24, 2026 | 1 PM (MT)

Nara Visa, NM

195 Registered Hereford & Angus Bulls

Yearling & 18-Month-Old Bulls

Bid online! Bid.Live-Ag.com



Horned
Reg: 44667727

PCC 9367 0183 MAVERICK 4384 DOB: 9/28/24

BW	WW	YW	MM	TEAT	REA	MASS	CS
1.9	69	127	19	1.3	1.01	0.08	174



Horned
Reg: 44669161

PCC 457Y 8G BENTON 4355 ET DOB: 9/25/24

BW	WW	YW	MM	TEAT	REA	MASS	CS
2.1	79	109	27	1.3	0.91	0.05	158



Polled
Reg: 44669165

PCC 9356 0183 MAVERICK 4401 ET DOB: 9/24/24

BW	WW	YW	MM	TEAT	REA	MASS	CS
4.2	68	106	19	1.1	1.30	0.05	159



Polled
Reg: 44667708

PCC 1383 0183 MAVERICK 4353 DOB: 9/23/24

BW	WW	YW	MM	TEAT	REA	MASS	CS
2.4	61	98	32	1.3	1.09	0.03	147



Polled
Reg: 44667697

PCC 7028 0183 MAVERICK 4342 DOB: 9/24/24

BW	WW	YW	MM	TEAT	REA	MASS	CS
3.8	75	124	32	1.1	1.12	0.15	205



Scurred
Reg: 44669151

PCC 9311 8G BENTON 4329 ET DOB: 9/22/24

BW	WW	YW	MM	TEAT	REA	MASS	CS
1.5	62	105	34	1.3	1.01	0.40	189



Reg: 21448615

PCC 8836 HIGH ROAD 4829 ET DOB: 09/20/24

BW	WW	YW	HF	MA	MASS	REA	SM	SC
1.5	76	128	12.9	16	0.29	0.98	88	275



Reg: 21448601

PCC 8836 9961 HIGH ROAD 4878 DOB: 09/04/24

BW	WW	YW	HF	MA	MASS	REA	SM	SC
0.6	68	114	12.5	34	0.26	0.6	99	247



Reg: 21451906

PCC 9506 739L ETERNITY 5541 DOB: 02/17/25

BW	WW	YW	HF	MA	MASS	REA	SM	SC
2.6	77	134	11.5	37	0.65	0.99	76	258



Scan, call or text for a catalog!
 Kyle Pérez 575-403-7971
 Michael Pérez 575-403-7970
PerezCattleCo.com





(continued from page 10)

economic indexes across pastures, just as they do for registered cattle.

"It's giving us a more accurate depiction of what that animal's genetics look like and what she possibly can do," he says.

This precision is critical for strategic breeding decisions that enhance herd performance.

"By integrating Select genomic EPDs directly into CattleMax, we're giving commercial producers a powerful, streamlined way to turn genetic data into smarter management decisions," Ellis says. "This connection makes it easier for cattlemen to see the full picture — linking genetics, performance, and herd records — so they can make faster, more informed choices that drive efficiency and profitability."

Genesis served as a pilot for this integration, with Zoetis and CattleMax collaborating to embed INHERIT Select results into the software's database, a process Shepard found remarkably smooth.

"It's just so easy," he says. "The guys at Zoetis and CattleMax have both been fantastic to work with. Any time I need anything, they're Johnny on the spot."

CattleMax, already an integral part of Genesis Enterprises, now offers even greater value.

"As the most widely used cow-calf software in North America, it's essential to support the tools and management practices of our diverse group of ranchers," says Terrell Miller, Founder and CEO of the software company. "The new partner connection with Zoetis will

enable producers to import their genomic EPDs and genomic traits directly into their CattleMax account, saving time and eliminating manual entry."

And for commercial producers, where bull genetics are often well-documented but genetic information on cows lags, this integration levels the playing field.

"No doubt," Shepard says, "it's going to improve bottom lines."

About Zoetis—As the world's leading animal health company, Zoetis is driven by a singular purpose: to nurture our world and humankind by advancing care for animals. After innovating ways to predict, prevent, detect, and treat animal illness for more than 70 years, Zoetis continues to stand by those raising and caring for animals worldwide — from veterinarians and pet owners to livestock producers.

Raising our prospects to be your winners.

Offering show-quality calves!




Edy Brainard
806-217-2515
edy_b2015@hotmail.com
Canadian, TX

SEXTON CATTLE COMPANY
ESTABLISHED 1983 ■ GONZALES COUNTY



SEXTON CATTLE COMPANY
ESTABLISHED 1983 ■ GONZALES COUNTY

Dwight Sexton cell 830-203-0168
sextoncattle@icloud.com
9528 W. St. Hwy. 97 ■ Cost, TX 78614



shop our brand for quality show calves and cattle

HALE CATTLE COMPANY
Bradley Hale | 806-898-3345
P. O. Box 38
Miami, Texas 79059
bradleyhale27@yahoo.com
Cattle are located at
1900 Lone Star Rd, Miami, TX

Texas Hereford

Application for Membership in the Texas Hereford Association

Benefits of a THA Membership

The **Texas Hereford Association** (THA) was organized in 1899 in Fort Worth, Texas. Its membership has included the elite of the Texas Hereford industry since its inception and continues to have elite loyal members and supporters.

As an association one of its goals is the promotion of Hereford genetics in Texas and connect buyers and sellers. The THA sponsors the Powerhouse Commercial Heifer Show and Sale in January during the Fort Worth Stock Show and Rodeo (FWSSR), along with the Fall Classic Bull & Female Sale in Buffalo, Texas, in October. Both sales are ways that members can market their cattle and promote their operations.

The THA is also represented at many industry events including the Texas and Southwestern Cattle Raisers Association Convention and Texas A&M Beef Cattle Short Course, along with other statewide seminars and events. The annual meeting of the THA is held during the Hereford weekend at the FWSSR in January.

The **Texas Hereford Association Foundation** is a 501(c)3 portion of the THA. Its purpose is to support educational programs and youth through scholarships and internships.

The **Texas Junior Hereford Association** is for our young future Hereford breeders. The members' membership extends through their 22nd birthday with the opportunity to participate in junior activities at age 7 by January of the current year. The largest state cattle breed show in the country is hosted by the TJHA in late May/early June each summer and draws more than 500 head and more than 240 participants. Many contests outside of the show ring are held during this event including public speaking, quiz bowl and poster contests. Many scholarships are also presented during this show.

The **Texas Hereford Auxiliary** is an affiliated association that includes women who are proud to support the Hereford breed. Their annual meeting is held during the activities in Fort Worth in January. They offer scholarships as well and help to promote the Certified Hereford Beef® program.

The official magazine of the THA is the **Texas Hereford**. It is published 11 times each year with the June/July combined to serve as a valuable directory of members of the association, junior association and Auxiliary. It is a resource used by thousands in the cattle industry. All THA members receive a free listing with information pertaining to your herd such as herd sires, bloodlines, location of farm or ranch, telephone numbers, etc. This herd listing alone is worth the price of membership.

As the only publication in Texas devoted solely to Herefords it includes news about the association, calendar of events, news from the American Hereford Association and timely editorial features. You are encouraged to advertise and take advantage of having your name available for others to find you. Low rates make it a wise choice your marketing program.

The THA continues to be a proud leader in the livestock industry promoting ownership of quality Hereford cattle.

ACTIVE MEMBERSHIP APPLICATION

I hereby make application for membership in the TEXAS HEREFORD ASSOCIATION. Upon becoming a member, I will abide by the constitution and By-Laws of the Association and also the rules of the American Hereford Association.

I am the owner of _____ head of registered Herefords and _____ head of commercial cattle.

Attached hereto is remittance of One Hundred and twenty-five dollars. (\$125.00 covers active membership for one year). Dues include a subscription to the *Texas Hereford* magazine.

NAME _____

RANCH NAME _____

ADDRESS _____

CITY _____

STATE _____ ZIP _____

PHONE _____

E-MAIL _____

WEBSITE _____

SPOUSE'S FIRST NAME _____

SIGNED _____ DATE _____

SUBSCRIPTION FORM - \$25.00 per year includes directory issue

NAME _____

ADDRESS _____

CITY _____

STATE _____ ZIP _____

ALL MEMBERSHIPS ARE UP FOR RENEWAL ON DECEMBER 31

TO COMPLETE
THE FORM
ONLINE



TEXAS HEREFORD ASSOCIATION

Diane Johnson, Manager/Editor
Office: 817/831-3161

4609 Airport Freeway
Fort Worth, Texas 76117
e-mail: texashereford@sboglobal.net
www.texashereford.org

Missy Coffelt, Ad Sales / Field Rep
Cell: 682-309-7555
e-mail: texashereford4609@gmail.com

Annual Dues: \$125 / \$130 if paid online

TO PAY
MEMBERSHIP
DUES ONLINE



Drive Cattle Productivity with Combination Deworming

Combination treatment provides different modes of action to enhance parasite control in cattle.

Parasites are a hidden drain on cattle performance, quietly stealing productivity and profit from herds across the country.

For producers, the cost isn't just in lost weight gain, but also in overall herd health and efficiency. That's why ranchers and veterinarians alike are turning to improved parasite control strategies, like combination treatment.

"Combination treatment is the use of two or more dewormers from different classes, each with a different mode of action, to get more effective control," said Matt Washburn, DVM, Boehringer Ingelheim.

The advantage? Each dewormer targets parasites in a different way. When used in combination, they can help reduce the number of parasites left behind. In fact, fecal egg counts in cattle herds have been shown to drop by nearly 99% when using dewormers from different classes.

Understand dewormer classes for smarter control

To get the most out of combination treatment, it helps to understand how each class of dewormer works.

Dewormers can be divided into three different classes, based on their chemical structure and mechanism of action: macrocyclic lactones (endectocides), benzimidazoles (white dewormers) and imidazothiazoles. Each class controls a distinct spectrum of parasites, and for a different amount of time (see Figure 1).

"Some classes of dewormer do a better job controlling certain parasites than others," stated Dr. Washburn.

"Endectocides provide strong coverage against both internal and external parasites, while white dewormers work well against only internal parasites."

There are also differences in how long the dewormers will persist in the animal.

"Most of our macrocyclic lactones have a persistence of about 28 to 30 days, with the exception of the extended-release dewormer, with which we can get out to 150 days," shared Dr. Washburn. "On the other side of that, you've got the benzimidazoles, which are also known as purge dewormers, because they're going to clean the animal out, and in two days, they're gone."

Putting combination treatment into practice

Near Okemah, Oklahoma, rancher Buck Rich has been using combination treatment for several years under the guidance of his veterinarian, Dr. Tyler Thomas, to protect his nearly 2,000 cow-calf pairs, as part of his deworming protocol at Leaning Oak Ranch.

"We'll normally use an injectable, and then we'll do an oral drench," said Rich. "It seems to work really well for us, and cleans those cattle up a little quicker. That's our go-to protocol now."

Depending on the time of the year, Rich may apply a pour-on dewormer to the calves instead of an injectable, as part of his combination treatment protocol for additional coverage.

(continued on page 16)

Figure 1. The three classes of dewormers.

CLASSES OF CATTLE DEWORMERS	
MACROCYCLIC LACTONES (ENDECTOCIDES)	
DRUG CLASS INCLUDES	CLASS KNOWN FOR
Ivermectin Eprinomectin Doramectin Moxidectin	Endectocides offer convenient injectable and pour-on formulations with internal and external parasite control. Read each product label for persistent efficacy claims.
BENZIMIDAZOLES (WHITE DEWORMERS)	
DRUG CLASS INCLUDES	CLASS KNOWN FOR
Oxfendazole Fenbendazole Albendazole	White dewormers deliver a rapid "purge effect" and only control internal parasites. Efficacy lasts no longer than two days. See efficacy claims listed on each label.
IMIDAZOTHIAZOLES	
DRUG CLASS INCLUDES	CLASS KNOWN FOR
Levamisole	Known for being quickly absorbed and distributed throughout the body but only controls internal parasites. Can be delivered orally, topically and by injection. See efficacy claims listed on each label.

DEMAND THE BRAND

COPELAND & SONS HEREFORDS

ANNUAL BULL SALE

MONDAY, MARCH 30, 2026

1 p.m. MDT at the Five States Livestock Auction, Clayton, New Mexico

50 HEREFORD BULLS SELL *Horned & Polled*

Also selling 25 Open Commercial Heifers *Sired by Copeland Hereford bulls and out of Angus cows*

Sons of these Copeland & Sons herd sires sell Monday, March 30th:



RPC JCS 7119 007 RUBBLE 210

AHA 44376473 • Horned

BR ER Big Country 007 ET x NJW 73S 980 Hutton 109Z ET

EPDS CED +3.9, BW +5.5, WW +71, YW +118, SC +1.0, MILK +31,
CW +90, REA +1.06, MRR +.31, BMI +438, BH +535, CHB +176



JCS HONDO 9612

AHA 44036276 • Horned

JCS 88X 5847 ET x Bar S LHF 028 240

EPDS CED +8.6, BW +1.7, WW +46, YW +79, SC +1.0, MILK +34,
CW +76, REA +.77, MRR +.16, BMI +332, BH +393, CHB +135



JCS CHISUM 9536

AHA 44036181 • Horned

JCS 88X 5847 ET x UPS Domino 5216

EPDS CED +8.3, BW +2.2, WW +54, YW +83, SC +1.4, MILK +26,
CW +57, REA +.29, MRR +.30, BMI +365, BH +449, CHB +119



SR DOMINATOR 170H

AHA 44147494 • Horned

BCC Dominator 6190 x UU Turning Point

EPDS CED +5.2, BW +2.6, WW +57, YW +90, SC +1.6, MILK +30,
CW +75, REA +.37, MRR +.33, BMI +390, BH +481, CHB +134

Celebrating 83 years of Ranching & Raising Quality Herefords!



Cliff & Pat Copeland 575.403.8123
c3copeland@plateautel.net
Matt, Alyssa, Cally & Kinley Copeland
M 580.336.8284 • A 731.499.3356
office@copelandherefords.com
Barbara Copeland
copelandherefords.com



Sale catalogs mailed on request. Ranch visitors always welcome!

859 Romero Road, Nara Visa, NM 88430



Dustin N. Layton 405.464.2455
laytond@yahoo.com
Chisolm Kinder 405.747.4683
laytonauction.com



Krebs Cattle, guest consignor
Ty, Kaleigh, Kynsleigh, and Kashlyn Krebs
Gordon, NE • Ty 308.360.1972



Online bidding:
https://bid.live-ag.com



(continued from page 14)

Strategic timing can also make combination treatment even more effective, especially when cattle are carrying their highest parasite loads. "Using combination treatment, you get a better clean-out up front, and you'll see it on the cattle, particularly coming out of winter, when our highest parasite load occurs," said Dr. Thomas. "They'll shed that winter coat off, they get fat, and they look good."

Recommending combination treatment to producers for the first time can sometimes be a tough conversation, because of the additional cost of another dewormer.

"Going from a single class to combination therapy, producers are almost always on a macrocyclic lactone, and they're adding a white dewormer to it," noted Dr. Thomas. "I would just tell them it's well worth it, it's very economical, and it doesn't take much more effort. If anybody tries combination treatment, they can see the results in the cattle."

Rich is one of the producers Dr. Thomas has worked with who has seen benefits from implementing a combination treatment protocol.

"We've seen a drastic change," said Rich. "The cattle look better. Their hair coat is better. I really think combination treatment is worth it for our operation."

Combining parasite control programs

Healthy cattle that put on weight and stay in condition are reason enough for Rich to continue implementing combination treatment and other deworming practices advised by Dr. Thomas.

"We're getting paid for pounds of beef at the end of the day," related Rich. "Using a quality deworming program helps put on more pounds, which is always a benefit in our business."

For long-term success that helps drive performance and profitability, combination treatment should be part of a broader parasite control plan that includes:

- Diagnostic testing: Performing routine diagnostic tests, such as fecal egg count reduction tests (FECRT) and coprocultures, can help assess the effectiveness of a deworming program and identify the parasites that may be surviving treatment.
- Refugia: Intentionally not deworming a small percentage of the herd is recognized as an important factor in delaying the onset of parasite resistance.²
- Management: Producers can increase overall herd immunity through routine vaccinations and enhanced nutrition. Limit overgrazing, maintain appropriate forage height, and rotate pastures, if possible.



Rancher Buck Rich (left) applies a pour-on dewormer to his cattle as his son looks on.



Dr. Tyler Thomas applies an oral drench dewormer to a cow.

When evaluating deworming practices, be sure to include a veterinarian in the process, similar to how Buck Rich and Dr. Tyler Thomas have collaborated to develop a parasite control plan for Leaning Oak Ranch.

To further investigate combination treatment and the other deworming strategies, tune into Out Here with the Legends, where Buck and Dr. Thomas discuss all things sustainable deworming.

Our Congressional Representatives in OKC!



Festus

Champion Spring Bull Calf
National Hereford Bull Show
Cattlemen's Congress

Has the numbers and nomenclature to be
a force in today's Hereford industry.

WCC 222 FESTUS 2501 • Reg. No. 44706222

Stellflug Gunsmoke x EXR Bankroll

#	CE (%)	BW (lb)	WW (lb)	YW (lb)	DMI (lb)	SC (cm)	SCF (%)	MM (lb)	MG (lb)	MCE (%)	MCW (lb)	UDDR (%)	TEAT (%)	CW (lb)	FAT (in)	REA (sq.in)	MARB (deg.)	BMI (\$)	BII (\$)	CHB (\$)
EPD	-1.3	+3.1	+67	+119	+0.2	+1.6	+17.4	+29	+62	+0.4	+104	+1.20	+1.20	+98	+0.084	+0.77	+0.51	+\$432	+\$542	+\$199

Ringgold

2nd in Class

National Hereford Bull Show
Cattlemen's Congress

Our thanks to Valley Oaks Angus,
Oak Grove, MO for their purchase of
Ringgold...2 generations of WCC product.



WCC 229K RINGGOLD 2496 • Reg. No. 44684020

WCC Bell Ringer x WCC Texas Time

**Herd bull Prospects &
Foundation Females by
the most Modern, Proven
Genetics Available.**



P.O. Box 91 • Irene, TX 76650

J. Mac Weil
(254) 495-3386
macweil@yahoo.com

Jon Weil
(225) 324-0770

THE TCFA JUNIOR FED BEEF CHALLENGE was designed to encourage young people to gain practical experience in feeding commercial beef cattle. This program stresses the importance of proper animal husbandry and financial management. Over the last 25 years, TCFA has introduced hundreds of young people to the cattle feeding industry through the Junior Fed Beef Challenge.

This year, Texas Hereford Association (THA) will participate in the program for our junior members and approved by the Executive Committee. The THA is teaming up with the TCFA and will be adding in award monies for three different divisions developed by THA. **The three divisions for the steers will be 1) Registered Herefords 2) Commercial Herefords (at least 50% Hereford) and 3) Black or Red Baldy. The junior must be a member of the junior association.**

The established rules for the TCFA program will be followed and then the THA Foundation will add in the monies for qualifying steers.



TCFA Junior Fed Beef Challenge

Find complete information on the TCFA website and click on the educational programs tab. THA breeders should consider the advantage of selling steers to these participants that will help promote your genetics. Mark Ellison, Rancho Viesca Herefords, is our lead in this portion of the program. Contact him at (979) 676-2601 or ranchoviesca@yahoo.com.

For more information, a complete article was published in the November 2025 issue of the *Texas Hereford*.

Items to note:

- Calves are spring-born calves
- Weaned in Sept/Oct @ 450+ lbs.
- Usually run on wheat pasture until March
- At March entry date, calves should be weighing 8-900 lbs.
- Calves can be fed at home or in a feedlot.
- At mid-July delivery/slaughter steers are going to weigh about 1400 lbs.

Source: Texas Cattle Feeders Association (TCFA) website.
www.tcfa.org/educational-programs

**Visitors
are
always
welcome!**

BIG DADDY
CATTLE CALVES

Monty Williams
254.485.1636
33011 W FM 8
Dublin, Texas 76446

**Steer in
the right
direction...**

reliable source for Hereford & Hereford Cross

Rio Vista

Clark Family Club Calves
Ernest & Paula Clark • 817-933-1771
2001 St. Hwy 174 • Rio Vista, Texas 76093
-eclark59@hotmail.com
Hereford & American Show Steers

KG Cattle
Greg & Kristen Clark • 817-648-5347
American Show Steers

**Selling
horned
and polled
Hereford
steers**

**Clayton
Cattle
COMPANY**

Gary, Cindy, and Candace
940-393-9812
garyclayton@gmail.com
3340 CR 371 Dublin, TX 76446

BLACK HEREFORD RANCH

SINCE 1978 BHR HAS BEEN SELLING CHAMPION CALLIBER SHOW STEERS OF ALL BREEDS. STOP BY THE RANCH THIS SPRING AND PICK FROM 40-50 OF THE BEST HEREFORDS YOU'LL FIND ANYWHERE.

48 YEARS OF CREAM of the CROP



RES CHAMPION HEREFORD STEER
2024 HLSR
SHOWN BY ROXTON STONE
SOLD IN BRIAN MARTIN SHOW THE BRAND
STEER SALE TO KEVIN NEWMAN.



CHAMPION POLLED HEREFORD STEER
2025 HLSR
SHOWN BY JACOB HOVIND
BRED BY BUTCHEE
PLACED BY LUKE JAMES



RESERVE ENGLISH STEER
2025 DIXIE NATIONAL
SHOWN BY CALLEE KNOTS
BRED BY KIESCHNICK & THANKS TO THE
DYESS BOYS FOR HELP



1ST PLACE LT WT POLLED HEREFORD
2025 SAN ANTONIO
SHOWN BY THE SCRIBNER FAMILY
BRED BY HASELOFF



1ST PLACE LIGHT WT. HEREFORD
2025 HLSR
SHOWN MY SLADE SMATHERS
ALSO HAD 2ND PLACE LT WT AT 2025 HLSR
SHOWN BY BOWERS FAMILY - THANKS TO JESS SHIRLEY

COC MADE RIGHT, COC CARPE DIEM, COC EASY JETT, COC HI WAY 33, COC BURNIN' DAYLIGHT, COC H. PLAINS DRIFTER, COC BATTLESHIP, AND MANY MORE ALL GOT THEIR START AT BLACK HEREFORD RANCH!

safe dates to remember

ALL SPRING AT BHR PRIVATE TREATY & ONLINE STEER SALES THRU VALIDATION

SAT., MARCH 7 BRIAN MARTIN SHOW THE BRAND - HEREFORD, TX

SAT., JUNE 13 26TH ANNUALL COC FEMALE & BULL SALE AT BHR

50-60 HEREFORD COWS, BRED HEIFERS AND BULLS WILL SELL! PLUS, 300 OTHER BREEDS

STOP BY ANYTIME AND SEE WHAT WE HAVE TO OFFER YOU FOR 2026 !



KRIS & GAY BLACK | KRIS BLACK 580-309-0711
WWW.BLACKHEREFORDRANCH.COM
ADDRESS: 18022 EAST 840 RD CRAWFORD OK 73638



WE DEFINITELY KNOW OUR PLACE.

BE AT OUR PLACE SALE DAY • MARCH 6, 2026



Your success
is our success.
Thanks to all
our customers
for keeping us
at the head of
the line.



Get updates on X
(formerly known as twitter)
@MoCoxCattle

IT'S USUALLY IN THE TOP 10!

YOU CAN GET YOURS ON MARCH 6, 2026



Stade Beerwinkle 1st Place Medium Weight Polled Hereford.



Sloane Beerwinkle 1st Place Middleweight Hereford Steer.



Sydney Kuykendall 3rd place Heavyweight Polled Hereford steer at HLSR.



Sloane Beerwinkle 3rd Place Middleweight. Hereford steer at HLSR.



Hayes Hunt 6th Place Middleweight Hereford at HLSR. He was a first year feeder and first time in the sale.



Prestyn Borgstedt 3rd Place Lightweight.



Sloane Beerwinkle 5th Place Lightweight Polled Hereford.

Morgan Cox • (432) 213-1235
Jonama Cox Myrick • (432) 238-6219
morgancoxcattlecompany.com • mcoxcattle@gmail.com
P.O. Box 11 • Tarzan, TX 79783



Weinheimer Family makes Valuable Contributions to Agriculture for 148 Years



Roy Weinheimer at the halter with his dad, Herman. Registered Herefords were added to the ranch's program in 1921 by Herman.

Success can be measured in many ways and withstanding the test of time is definitely one gauge of success. Weinheimer Ranch in Stonewall, Texas, has withstood that test for 144 years and continues to be a viable diversified operation with a rich history and strong family leadership.

The ranch has adapted when needed and the family ownership has remained strong and continuous. Today, it includes the Hill Country ranch, a ranch in Chaves County, New Mexico, plus a lease ranch in Crockett, Texas. Over the years, the income source has been cattle (both commercial and registered), sheep, goats, grains, peaches and hunting.

Jakob and Theresia Weinheimer and their six children arrived in Fredericksburg, Texas, in June 1846, which was the same year Fredericksburg was founded. They left Germany, traveled to Belgium, sailed for two months to Indianola, Texas and then homesteaded in the Texas Hill Country. Jakob and his two older sons were among signers of a petition that requested the Texas Legislature define the Fredericksburg area and form a new county named Gillespie from the existing counties of Bexar and Travis. The first Weinheimer brand was registered in 1851 and they received their citizenship in 1854.

Their son, John, would acquire substantial land holdings in the county, including the area now known as Stonewall and headquarters to the present-day Weinheimer Ranch. John's son, Jacob, would actually start the ranch in 1878, as well as be part of the original ownership of the Weinheimer Store, which continues in operation today. In 1880, Jacob and his wife would build the original log home where the main ranch house stands today.

Herman, one of three sons to Jacob, would be gifted the original ranch, while his brother, Hugo was gifted other land and brother Felix would take over ownership of the store. Herman and

his wife, Anna, would raise their six children in the original house built by Jacob. Under Herman and Anna's leadership, the ranch would add registered Herefords and American Quarter Horses, as Herman was an avid polo player. Of their children, two remain alive today: Roy, who is 101, and Clara, 98. The other three included Jake, Tom, Evelyn and Joanne. The girls would marry and move. Jake and Tom went to college and then the military. Roy remained and ranched alongside his parents. He and his wife, Bernice, were married in 1950 and moved in with his parents on the ranch. Herman would die suddenly in 1954 at the age of 64 years. Roy, who was 29 at the time, took over the management and has been at the helm since.

He and Bernice raised their eight children in the home that Jacob built and it has since been added on to over the years. Roy has lived only in this house his entire life and it's the center of operations for the ranch today. Tom served in World War II and worked as an engineer for the U.S. Geological Survey. He returned to the ranch after his dad's death. He and his wife, Betty, raised their children on the ranch. Tom would pass in 2005.

Anna, who lived to be two weeks shy of 104, was very involved in the ranch's management and was known throughout the Hill Country for her hunting and fishing skills. She bagged many deer in her lifetime, including her last two at the ages of 100 and 101.

Under Anna's ownership, the ranch was incorporated in 1959 with her and her six children as shareholders. Daughters, Clara and Joanne, sold their shares back to the ranch and today there are 18 shareholders from the four children of Herman and Anna. Roy's son, Len is the manager today and his son, Chism is living and working on the New Mexico division.

The Weinheimer history also includes involvement and leadership in many civic, church and agricultural organizations at each

By Martha A. Hollida | Reprinted courtesy of Southern Livestock Standard

generation. Roy was a founding member of the Hill Country Hereford Association and is an honorary member inductee of the Texas Hereford Association.

The ranch grew in acreage as each generation made land purchases and additional land was leased throughout the area. At one time, they leased sizeable acreage in Gillespie and surrounding counties, but the population growth in the Hill Country has seen lots of ranchland converted to homes and subdivisions.

The ranch operates under two brands today, a running W and 93 that was first registered in 1887, which has been modified over the years. The 93 is on the Texas A&M University Kleberg Center's wall of brands and the 93 branding iron was on display for decades at the LBJ State Park Visitor Center when it opened in 1970.

Commercial cattle were part of the ranch from the beginning and in 1921, Herman purchased five registered Hereford heifers. The herd would grow and be strong in Line 1 breeding. The Weinheimers developed a strong market for their bulls throughout the Hill Country and into South Texas.



Tom (left) and Roy (right) Weinheimer with some of the ranch's Hereford bulls.



Left to right Len, daughter Lexus Haecker and Roy at TAMU Kleberg Center's Wall of Brands.

"Today, we run about 100 registered Herefords and we utilize the Hereford breed in our commercial outfits. My son, Cord, is instrumental in our registered Hereford operation," said Len. "We run Tiger Stripes cows here in the Hill Country and on the Crockett ranch. These are F-1 Hereford females x Brahman bulls, then crossed with Angus bulls. In New Mexico, our cowherds are predominantly commercial Hereford cows crossed with Angus bulls."

"We have scaled back our registered operation as the Hill Country has experienced tremendous change over the last 20 or so years," explained Len. "Urban sprawl is a major factor and many of our bull customers are just not in business anymore. Their land has been purchased for other uses. We used to sell a lot of bulls into South Texas also, and a lot of that land is now home to wildlife rather than cattle."

Annually, they market their Hereford bulls by private treaty and have a strong repeat clientele. They also consign to the San Antonio All Breed Bull Sale, where in recent years, they had the second-highest grading bull overall and one of the top

(continued on next page)

A registered herd of Herefords is still maintained on the ranch, but the Hereford breed is also found in their commercial herds.



(continued page 23)

sellers. They also take bulls to the Independent Cattlemen's Association Sale in Beaumont, where they won the high-grading bull honor a few years ago.

"These sales allow us to get our cattle out to a different audience and it expands our customer base. We have also been able to sell females from the registered segment to some of the bull buyers. It's a good way to advertise Weinheimer raised Herefords," said Len.

Marketing of the commercial calves varies due to economic and weather conditions. Calves at all the locations have been marketed through private treaty contracts, through Superior Livestock and some have been retained and fed in Texas feed yards.

A number of breeds of goats and sheep have been raised over the ranch's history. Today, it's mainly registered Spanish goats and some hair sheep that are part of the hunting division.

The ranch is involved in some hunting leases and also has guided hunts on some of the land in Texas and New Mexico. Today's wildlife includes whitetail deer, turkey, dove, ducks, axis deer, black buck antelope and in New Mexico, they have mule deer, pronghorn antelope and some quail.

They also have a peach orchard, which they lease out to a local grower. While Stonewall is known in the region for its annual Peach Jamboree, its wider claim to fame is the LBJ Ranch, home to President Lyndon Baines Johnson and now part of the national park service.

"LBJ's ranch was right next to ours. He started ranching and raising Herefords before he was elected president. We developed a strong relationship with his foreman and we owned bulls in partnership with LBJ. He was very open to learning about the cattle industry and enjoyed his Herefords," recalled Roy.

Len added that the Secret Service agents knew all the Weinheimers, even the kids, as they were allowed to go back and forth in the pastures very freely.

Another milestone in the ranch's storied history was in 1975 when Len and his younger brother, Don, captured grand champion steer honors at both Houston and San Antonio with their home raised Hereford x Simmental steers.

"Don was grand champion in San Antonio and his steer sold for \$23,600 and mine was grand champion at Houston and brought \$50,000," explained Len. "We put all that money in a separate account and we were able to pay for all the kids to go to college from it," said Roy. "It was good for our Hereford program, too," he added.

Roy, who is now 101, says that he never thought of doing anything else but ranching and being a part of the family operation.

"I don't know of a better place to have lived. Back in the day, everyone in the Hill Country was involved in agriculture. That is obviously not the case today. The most significant change in my lifetime would have been when we were able to eradicate the screwworm. That made a world of difference, not



Since 2005, the Weinheimers have been holding Camp Cousins on the ranch, celebrating their 20th Anniversary of the event last June.



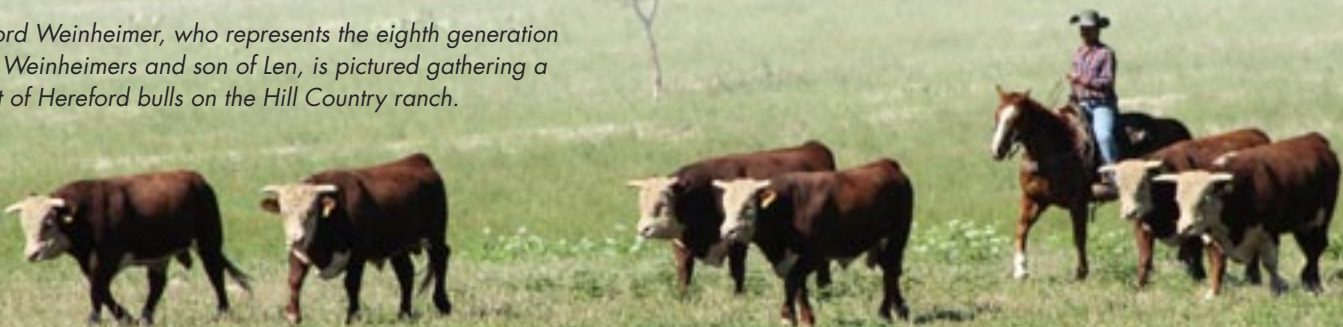
Roy's surviving children toasting Roy on his 101st Birthday this past December.

just in livestock but also in wildlife. It greatly increased the deer population and opened up a lot of avenues for income with deer hunting," Roy recalled.

Annually since 2005, the ranch hosts Camp Cousins in June. Weinheimers near and far return to enjoy the ranch, share their rich heritage, remember their ancestors and acknowledge the family's contributions to the Hill Country and the agricultural industry.

Roy's great-grandchildren, who can often be found sitting in his lap, are now the ninth generation of Weinheimers on the ranch. Their ancestors, Jakob and Theresia, emigrated from Germany to start a new life and the foundation and principles they established continue to inspire the Weinheimers to work hard and be a contributing part of American agriculture.

Cord Weinheimer, who represents the eighth generation of Weinheimers and son of Len, is pictured gathering a set of Hereford bulls on the Hill Country ranch.



**All Kinds, All Colors
Heavy on Herefords!**

18th Annual

MAIN EVENT

Live Sale: 3.7.26 • Private Treaty All Spring

PATSCHKE
LAND & CATTLE
Lubbock, TX
Brandon Patschke
806.781.0071
Tyler Roberts
580.309.0774

Join Us Online

 Red River Reds
Online Sale
Sunday, June 7, 2026



Larry Woodson
214-491-7017
Bonham, TX

Still River Ranch
www.stillrivranch.com
ranch located 10 miles south of Bonham
and 2 miles south of Gober

ZOELLER FAMILY
HERFORDS 42


**HORNED AND POLLED BULLS,
SHOW HEIFERS, & STEERS
AVAILABLE.**

LYLE & DONA: 254.223.4517
ZACH & KENDALL: 254.223.4516
CALLIE: 254.223.4518

GATESVILLE, TX

RAGLAND
Herefords

Rooted in History,
Defined by Victory.²⁵



Congratulations
to Landry Allan for exhibiting the
2025 HLSR Reserve Champion Hereford
Market Steer bred by Ragland Herefords!

RAGLAND HERFORDS
30 Griffin Dr., Canyon TX 79015
JD Ragland 806-463-0245
Brady Ragland 806-252-1159
j-ragland@tamu.edu



Odessa, Texas

WHERE **HEREFORDS** NEVER GO OUT OF STYLE!

HALE CATTLE CO.

BLACK HEREFORD RANCH

TWO C LIVESTOCK
MIMMS HEREFORDS
EARVER HEREFORDS
BORN RANCHES

MUNSON CATTLE

BAR A CATTLE

DAY SHOW CATTLE

RAGLAND HEREFORDS
PATSCHE'S
BLAND LIVESTOCK

BRENT AND BRENNAN WILLIAMS

BORGSTEDT/
YATES

KT CATTLE
COX
CATTLE

HORN
LIVESTOCK

HOGG
RANCH

NEWMAN
CATTLE

SISTERS

GKB CATTLE

ROBINSON CATTLE CO.

DRS HEREFORDS



ODESSA, TEXAS

TUSA SHOW CATTLE

OPEN BAR CATTLE CO
ELEVEN UP RANCH
WALDRIP BROS.
COVERED M CATTLE

REED
VESTAL
RANCHES

Steer & Heifer Directory

SUPPORT THE BREEDERS WHO SUPPORT
OUR SHOW THIS BUYING SEASON!



BAR A CATTLE COMPANY
Nocona, TX
979-561-7115



BLAND CATTLE COMPANY
Slaton, TX
806-781-2647



BLACK HEREFORD RANCH
Crawford, OK
580-309-0711



BORGSTEDT CATTLE / YATES HEREFORDS
Tarzan, TX
432-268-3871 / 432-270-3232

BRENT & BRENNEN WILLIAMS
Decatur, TX
817-598-6876



CARVER HEREFORDS
Abernathy, TX
806-292-4444 / 806-679-2370



COVERED M CATTLE COMPANY
Poth, TX
210-260-7273



COX CATTLE COMPANY
Tarzan, TX
432-213-1235



DAY SHOW CATTLE
Meadow, TX
806-638-0063 / 806-773-3401



DRS HEREFORDS
Comanche, TX
325-330-0103



GKB CATTLE
Waxahachie, TX
254-707-2199



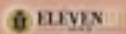
HALE CATTLE COMPANY
Miami, TX
806-898-3345



HOGG RANCH
Monahans, TX
432-943-2644



HORN LIVESTOCK
Anson, TX
325-338-5700



KONNI & GALEN WILLIAMS
Seguin, TX
918-533-5110 / 830-560-6126



MIMMS HEREFORDS
Lorenzo, TX
806-778-6677



MUNSON CATTLE
Shallowater, TX
806-893-3518



NEWMAN RANCH
Stanton, TX
432-967-3248



OPEN BAR CATTLE COMPANY
New Braunfels, TX
210-889-8372



PATSCHKE LAND & CATTLE
Lubbock, TX
806-781-0071

RAGLAND HEREFORDS
Ralls, TX
806-252-1159 / 806-463-0245



REED VESTAL RANCHES
Houston, TX / Independence, KS
940-452-6008



ROBINSON SHOW CATTLE
Gardendale, Texas
432-466-4281 / 432-517-0064

SISTERS II
Carlsbad, TX
325-656-5294



THOMAS CATTLE
Ropesville, TX
406-239-5113



TUSA SHOW CATTLE
Reagan, TX
254-587-2214



TWO C LIVESTOCK
Hart, TX
940-634-3393 / 940-727-3458



WALDRIP BROTHERS
Stockdale, TX
830-358-8797



WESTON BORN FAMILY
Idalou, TX
806-338-0437



Join Us!

JANUARY 7-16, 2027
SANDHILLS HEREFORD SHOW

Cattlemen's Congress Show Results

Cattlemen's Congress | January 7-8, 2026 | Oklahoma City, Oklahoma



Junior show grand & champion polled senior heifer calf, Landry Allan, Nocona, TX, with BACC 241 Haley 472, a Nov. 17, 2024, daughter of UPS Sensation 2296 ET.



Junior show reserve grand & and reserve champion horned junior yearling female, Maddie Jenkins, Athens, TX, with HAW BACC Tiana 407M ET, a Feb. 8, 2024, daughter of T/R BPF American Classic 561CET.



Grand champion pen-of-five bulls: Sidwell Herefords, Carr, Colo., sired by PCC 0152 Maverick 3058 ET and BR S Quentin G032 ET.



Grand champion pen-of-three bulls: GKB Cattle, Desdemona, TX, with a group sired by T/R GKB AC Red Kingdom J16 and EKS DWK B26 Final Chapter J10.

ALTOSID
IGR

WHEN THEIR HEADS GO DOWN, YOUR REVENUE GOES UP.

See a 15.8% increase in daily weight gains.

Keep cattle eating. Grow your bottom line with the first and proven feed-through to control horn flies.

SEE THE ALTOSID® IGR ADVANTAGE. THE PROOF IS IN THE PROFITS.
www.altosidgr.com

CENTRAL
LIFE SCIENCES



Grand champion pen-of-three females: Mila Perez, Canyon, TX, with a group sired by RPC JCS 7119 007 Rubble 210.



Cattlemen's Congress Show Results

SandHills Stock Show & Rodeo | January 8-9, 2026 | Oklahoma City, Oklahoma



Grand & champion polled senior heifer calf, Landry Allan, Nocona, TX, with BACC 241 Haley 472, a Nov. 17, 2024, daughter of UPS Sensation 2296 ET.



Horned premier exhibitor: GKB Cattle, Desdemona, TX.



Grand & champion horned senior bull, Hoffman Ranch, Thedford, Neb.; Lindskov's LT Ranch, Isabel, S.D.; and Buck Cattle Co., Madill, Okla., with Stellpflug All That ET, a Jan. 30, 2023, son of JDH AH Benton 8G ET.



Reserve grand & champion horned senior bull calf, GKB Cattle, Desdemona, TX; and Burns Farms, Pikeville, Tenn., with BF GKB 5502 McCrae 200M ET, an Oct. 28, 2024, son of KLD RW Marksman D87 ET.



Grand & champion polled intermediate yearling bull, Jared and Kati Richardson, Henrietta, TX; and Saige and Sloane Beerwinkle, Earth, TX, with SMB KTRCC Pendleton 420M, a June 13, 2024, son of AAG Kaboom 502D



Reserve grand & champion polled junior bull calf, Upstream Ranch, Taylor, Neb.; GKB Cattle, Desdemona, TX; Kevin Jensen, Courtland, Kan.; and Bar A Cattle Co., Nocona, TX, with KJ 8037 Arrowhead 755N ET, a Jan. 4, 2025, son of KJ 753D Tomahawk 605K ET.

"We're **PROUD** of our Texas Hereford members success.
To find all results, go to [Hereford.org](https://www.hereford.org)"

SandHills Show Results

SandHills Stock Show & Rodeo | January 10, 2026 | Odessa, Texas



Supreme Champion & Champion Polled Hereford Heifer; Brogan Patschke, Lubbock, TX ~ Dust 2 Diamonds 422M ET



Reserve Supreme Champion & Champion Horned Hereford Heifer, Briar Bannahan, Sanger, TX ~ Wildcat Providence 5347 ET



Reserve Champion Polled Hereford Heifer; Jarrett Worrell, Mason, TX ~ T/R 7260 Lexus 80M



Reserve Champion Horned Hereford Heifer; Sloane Beerwinkle, Earth, TX ~ SMB AAG CO H18 Miley 424M



Supreme Champion & Champion Polled Hereford Market Steer, Myles Henley, Lubbock, TX



Reserve Supreme Champion & Champion Horned Hereford Market Steer, Jett Hale, Miami, TX



Reserve Champion Polled Hereford Market Steer, Kelbi Long, Idalou, TX



Reserve Champion Horned Hereford Market Steer, Cooper Pepelka, Levelland, TX



Southwestern Burrito Bowl for the Win!

We have a New Super Bowl Champion

One-dish meals are a favorite at our house, and this gem of a recipe became very popular a few years back as more and more people began to 'meal prep' or prepare meals in advance on Sundays for the week ahead. As ranchers or those who are getting ready for harvest, meals like our Southwestern Burrito Bowl are easy to transport to hungry families, ranch hands, or crews to feed in the pastures or fields. This meal would also be perfect at stock shows. Some of you may even like this recipe wrapped up in a tortilla and made into a quick burrito to eat on the run. However you serve up our recipe for Southwestern Burrito Bowls, we promise that you will be well fed and end up with a very hearty and filling meal that everyone loves!



Southwestern Burrito Bowl

- 2 - 3 pounds ground beef
- 2 - 15-ounce cans black beans, drained and rinsed
- 1 cup uncooked rice
- 2 - 15-ounce cans whole kernel corn, drained
- 1 white or yellow onion chopped fine (or in larger chunks according to your taste)
- 1 - 14.5-ounce can green chiles with juices
- 2 tablespoons taco seasoning
- 1 tablespoon chili powder
- 1 teaspoon Cajun Seasoning (optional)
- 4 cups beef broth, you can use a beef bouillon cube to make this instead of beef broth from a can.

Toppings: grated cheese that melts easily (Kraft's Meximelt grated cheese blend), sliced black olives, additional green onions, chopped, Salsa, or what we call in Texas - hot sauce (what you eat with tortilla chips), chopped cilantro.

Instructions

- Brown the meat and onions until no longer pink and onions are translucent. Drain any of the meat juices left over by spooning out of the pot.
- Add drained and rinsed black beans, corn, green chiles, and all seasonings and stir well.
- Add rice and chicken broth to the pot and bring to a boil. Cover the pot with the lid and reduce the heat, continuing to boil on a 'low boil' until rice is done and liquid is gone. A 'low' boil is 'soft' boil...not raging and bubbling hot, yet still bubbling on low for 30 minutes. It is best to cook this in a non-stick skillet or pan.
- Serve Southwestern Rice Bowls in large bowls with toppings mentioned above. We also added additional Tabasco sauce and cajun seasoning like Tony Chachere's Creole Seasoning that is our favorite. This would be great with a side of salsa and tortilla chips. Try it with my Nolana's Family Hot Sauce found on my site under appetizers.

Cook's Note: This recipe can easily be cut in half for smaller servings or doubled and tripled for feeding a crowd of people. Southwestern Rice Bowls could also be prepared, frozen, and reheated with additional water or beef broth. Just be careful not to burn the rice during the reheating process and stir constantly. You can also use ground venison (deer meat) as an alternative to beef.

We modified this recipe the second time we prepared it by using pinto beans and cream of corn. However, my daughter preferred the whole kernel corn and black beans. My husband enjoyed the pinto beans. This is also a low-calorie dish and is great for those who like to meal prep, which can also be made higher in protein by adding cottage cheese on top to help you with your count for the day. Enjoy!

Alise Nolan | www.theranchkitchen.com

COX
CONCRETE PRODUCTS

Tired of replacing metal, wooden and plastic troughs?

903-572-5902 • Mt. Pleasant, TX • coxconcrete.com

WEST TEXAS

B-Bar Herefords

Established 1983
Brad Stuart
325-338-5111
876 State Hwy. 70 S.
Roby, TX 79543
Bbarherefords.com



McKNIGHT Ranch Co.

Bobby McKnight, Ranch Manager
432/426-3003
P.O. Box 1042 • FT. DAVIS, TEXAS 79734



J.T. Echols DVM

P.O. Box 709 • Breckenridge, TX 76424
Office: (254) 559-9421
Mobile: (254) 559-0156
muleshoeranch@gmail.com

BUTTON ESTES RANCH, LTD.

1900-2021

Ranch 432-638-7779
Office 432-664-8512 | FAX 432-570-7769
2000 West Tennessee | Midland, Texas 79701
Beau & Barbara 432/682-2272 | Ginny 432/687-2454



Jon David Moore
PO Box 331 • Hamlin, TX 79520
214-534-3402
jldmoore0623@yahoo.com

CASER RANCH HEREFORDS

P.O. Box 240, Mertzon, TX 76941
Pete and Angela Case • 325-650-6209
Stephen and Tiffany Loyd • 325-642-5818
pete@caseranch.com • www.caseranch.com
7350 FM RD 915 • Eldorado, TX 76936

Coates Ranch Co.

www.coatesranch.com
Box 645 • Mertzon, TX 76941
Steve Wayne: 325-835-2531
Stephen: 325-226-4184
Email: scoatesjr@yahoo.com

Select Group of Horned and Polled Hereford Steers for Sale

Morgan Cox (432) 213-1235
Jonama Cox Myrick (432) 238-6219
P.O. Box 11 • Tarzan, TX 79783
mcoxcattle@gmail.com



CLYDE HENSON

P. O. Box 820 • Kermit, TX 79745
432-940-8882



ROCKING CHAIR RANCH

LOYD WHITEHEAD | OWNER
Jonn Tolbert | Manager 325-396-4911
www.therockingchairranch.com
Fl. McKavett, Texas



RSS R. SCHLEGEL & SONS

Route 2, Olney, TX 76374
Registered Herefords Since 1974
Bulls, Females, Club Calves
email: rsshrfd@brazosnet.com
Ranch (940) 873-4437 Home (940) 873-4621

J—BULL & HEIFERS FOR SALE

HEREFORD RANCH
Jim Donnell - Owner
5 Paso de Poz Lane, El Paso, TX 79932
915-479-5209 (Jim's Cell) • 915-549-2534 (Sue's Cell)
915-532-2442 (Office) 915-877-2535 (Home)
email: jor@jorherefords@aol.com
"Texas' Only Hereford Operation West of the Rio Grande"
Se Habla Español

Massey Hereford Ranch

Sam and Kila Massey
P. O. Box 518 • Wickert, TX 79788
P. O. Box 691 • Stephenville, TX 76401
432-940-7720
samhereford@yahoo.com
www.masseyherefordranch.com



Mark & Teresa McClintock

Registered Herefords • Sales and Consulting
Mark (325) 650-4223 • Teresa (325) 763-9202
10614 Mule Creek Road • San Angelo, TX 76901
mclintock@wcc.net • markandteresamcclintock.com



PANHANDLE TEXAS

B & C CATTLE CO.

Bill or Chad Breeding
1301 N. Lions • P.O. Box 186
Miami, TX 79059 (806) 868-4661 or (806) 570-9554
breeder@amaonline.com

DAUER HEREFORDS

Continuing a legacy...
Quality Hereford
cattle since 1934.

Registered Hereford bulls,
heifers & Black Baldies for sale.
Justin Paul Dauer • 806-683-7073
887 County Road P • Panhandle, Texas 79068



Indian Mound Ranch

923 Hillside Ave. • Canadian, TX 79014
Lee & Jacqui Haygood
Res: 806/323-8232
Cell: 806/323-2906
Email: lee@indianmoundranch.com
www.indianmoundranch.com

Ledbetter Cattle Co.

Joe Dan Ledbetter • 806-236-0958
P.O. Box 266 • Wheeler, TX 79096
joedan@ledbettercattleco.com
www.ledbettercattleco.com

Mike & LaReshia Bragg

1923 Shawnee Trail
Dalhart, TX 79022
home 806-249-5367
cell: 806-333-4486
website: mlcattle.com • Email: mlcattle@mlcattle.com



Mimms Herefords

Jere, Brady, Rhett & Ryan
Lorenzo, Texas
806-842-3459

Ricketson Herefords

ALLAN RICKETSON • 806-333-0624
JARRETT RICKETSON • 806-676-8609
406 Oak Ave. • Dalhart, TX 79022

PANHANDLE TEXAS

BARBER RANCH

Channing, Texas 79018
Brett Barber 806-681-2457
Justin Barber 806-681-5528
www.barberranch.com
email: office@barberranch.com



RUNNING R CATTLE CO.

CANYON, TEXAS
Drew & Lauren Perez • 806-640-8340
drew@runningpcattle.com

Whitaker Farms

Flying 5 Herefords
Hereford Bulls for Sale
Steve and LaNell Whitaker
cell 806-774-7598
120 CR 291 • Hart, TX 79043
stevewhitakerfarms@gmail.com



"Marketing is an investment, not an expense."

NORTH CENTRAL TEXAS



Jackie Pullen *Est. 1985*
P PULLEN
HEREFORDS
 972-571-5906 CELL • 972-722-5081 RES
 460 Pullen Road • Rockwall, TX 75032

DDD
DDD
DDD
THREE D RANCH
PAUL DAVIS
 777 Paul Davis Lane
 ROCKWALL, TEXAS 75032
 972/771-3396 (RANCH)
 972/771-5653 (OFC.)
 MIKE HAWKINS, MGR.
 903/348-7049 (CELL)

Since 1947
Walker Herefords
 Stamford, TX • La Grange, TX
Don 325-773-2062
Tom 979-247-4119 • Cell 979-966-8353

woodypolledherefords.com

Woody Polled Herefords
GARY WOODY (972) 658-6903
 woodygary@sboglobal.net
 461 Rockcrest • McKinney, TX 75071

NORTH EAST TEXAS

DOUBLE DIAMOND HEREFORDS
Registered Polled Herefords

McDade, Texas • Rusk, Texas
512.970.1595 • 512.970.3588
 www.DoubleDiamondHerefords.com

The Doyle *"Genetics of today's leading performance families."*
ifference
DOYLE HEREFORD RANCH
 P.O. Box 82 • Wolfe City, TX 75496
 mobile: 214-240-4538
 www.doyleherefordranch.com
 email: mdoyle0326@yahoo.com

Mathias
Registered Herefords & Paint Horses
 Kurt • Brenda
 192 CR 4040 • Mt. Pleasant, TX 75455
 903-573-1791 • kmathias@txk.net

NOLAN HEREFORDS
 Scott, Alise, Ilissa, Bethany & Audrey
 1950 Skylark Rd. • Gilmer, TX 75645
 nolanherefords@aol.com
 www.nolanherefords.com
 Res.: 903-797-6131 • Cell: 903-738-5636

Pruitt Herefords

 MINEOLA, TX
ROB PRUITT • 903-569-4224
 Res. 903-569-2174 • robert1947pruitt@gmail.com

NORTH EAST TEXAS

Rader
HEREFORDS
 Mike, Susan, Steven, Sara
 3117 US Highway 67 E • Mt Vernon, Texas 75457
 903-439-4418 • raderherefords@gmail.com

Sunny Hill Ranch

 Pete Johnson
 Registered Polled Herefords
 Hwy. 94 West • 5 Miles
 Cell: (936) 465-1672
 e-mail: pjfmhj@yahoo.com
 Office: 844 Ben Dunn Rd. • Lufkin, TX 75904

EAST CENTRAL TEXAS

Brymer Ranch Herefords
 Registered Line One Herefords
 CALDWELL, TEXAS **WB**

 William and Anshin Brymer
 mobile: 979-585-7451

Sam & Barbara Dominey
 Ken Cook, Mgr.
 936-291-0008
BULLS FOR SALE
 3312B SH 19N
 Huntsville, TX 77340

G3 Harry & Cheryl Grett
 512-585-2948
 P. O. Box 969
 Elgin, Texas 78621
 g3ranch@aol.com

McKenney Farms **MK**
 Registered Line One Herefords
 Terrell, Texas
 "Doc" and Nancy McKenney
 Mobile 214-384-5465 • Ranch 972-524-0088
 Email: docmckenney@aol.com

Noack Herefords
 "Quality Registered Herefords"
7- BULLS FOR SALE 7-
 Office: 512-446-6200 • noackherefords.com

Raising cattle in Texas since 1855
SKRIVANEK RANCHES
 Joey & Susan Skrivanek, owners
 407 W. Mustang • Caldwell, TX 77836
 Joey res. (979) 567-3857 • cell (979) 224-8080
 office: (979) 567-3131 • e-mail: jskrivanekranch@outlook.com
 9 miles E. of Caldwell on Hwy 21, or 15 miles W. of Bryan-College Station on Hwy 21

Expect **affordable pasture bulls**,
 the type of easy keepers
 always in demand. *That's the only kind we sell.*
U- Ranch Thomas Cardwell
 512-689-5297 • tccardwell@earthlink.net
 2801 E. Howard Lane • Manor, Texas 78653

Atlas Farms Jimmy, Claudia & Precious Atlas
 214-202-5178
 817-456-4691 (cell)
 4920 CR 401
 Grandview, TX 76050
Your Source for Top End Bulls & Females

BAR OAK RANCH
 RANDALL BARNES & FAMILY
 HEREFORD BREEDERS
 TOLAR, TEXAS
 (817) 279-3543 Randall
 (817) 243-5867 Craig
 www.baroakranch.com
 email us at: herefords@baroakranch.com

Chastain Established in 1854
 cattle company Bulls, Females Club Calves
 P.O. Box 516 • Mineral Wells, TX 76067
 Jack's cell 817-821-3544 • Lee's cell 817-683-2150
 Ranch located 10 miles south of Mineral Wells on US281

CE Kevin Self (Savanna Layman) AJ Self
 214-287-1249 (www) 469-525-1214 (214) 952-1370
Dead End Ranch
 deadendranchtx@outlook.com
 789 CR 4534 • Whitewright, TX 75491
 @_deadendranch_

Flying 'S' Herefords
 Registered Line One Herefords • Palfrey, Texas

 Jim Strode James Strode
 214-361-6900 214-533-9669
 James.strode@gmail.com

HIFR HUMPHREYS
Farm & Ranch
 Owners: Gary & Claudia Humphreys
 817-304-1642 • Grandview, Texas

LANK HEREFORDS
 MILLSAP, TX
 BRYAN & JILL LANK, OWNERS
 ZACK MAUNEY, RANCH MANAGER
 940.329.8694 • LANKCATTLE.COM **LANK**

CENTRAL TEXAS

Circle M Ranch
 Jane S. Murphey, Manager
 254/588-9489 (cell)
 254/435-2162 (res.)
 P.O. Box 405 • Meridian, TX 76665

NEEL POLLED HEREFORDS
Replacement Heifers Available
 Nina Neel Sanders • (214) 454-8587
 Brady, Texas

DUDLEY BROS.
 "Registered Herefords Since 1938"
 Box 10, Comanche, Texas 76442
 Office: 325/356-2284 • Fax: 325/356-3185
 John: 325/642-0745 • Tom R.: 325/642-0748
 E-Mail: John@dudleybros.com

SPEARHEAD RANCH

 Paul and Sheila Funk • 254-289-7657
 525 County Road 51
 Copperas Cove, TX 76522-7004
 sheilabfunk@aol.com • www.spearheadranch.net


SOUTH CENTRAL TEXAS

MEISCHEN POLLED HEREFORDS RDR CATTLE
 Robert & Marilyn Meischen 1522 Woods Rd., Yorktown, TX 78164
 Randy & Deanna Soeder 3208 Good Luck Rd., Sequin, TX 78155
 361-550-5531 or 361-550-4326 830-305-9213 or 830-305-9211
 robertmeischen@gmail.com
 Registered Bulls, Heifers and Black Baldies
 www.meischenpolledherefords.com

Redbird Ranch
 Herefords • Golden Certified F1s
 Harlen Merks, Mgr. 361-649-1717
 Nopal, TX • 11 mi. No. of Yorktown
 redbirdranchcattle.com

GKB CATTLE
 **GARY BUCHHOLZ**
 Gary Cell: 214.537.1285
 Herdsman: Jay Creamer: 254.707.2199
 email: gary@gkbcattle.com
 Semen Inquiries: (254) 440-1440
GKBCATTLE.COM

See us for bulls, show steers & heifers
TT HEREFORDS
RICK TISDALE • Cell: 325-423-2509
 rtisdale@yahoo.com • 107 FAWN RIDGE • KINGLAND, TX 78609

ROCKIN' W HEREFORDS
 Maynard Warnken • 979-561-8846
 Kevin Warnken • 979-743-0619
 e-mail: rockinw@cvctx.com
 www.rockinwranchnet
 Fax 979-561-8867 • Drawer 29 • Schulenburg, TX 78956

Honeymoon Herefords
 "Breeding cattle for the 21st century."
 Jeff Mezger
 614 Honeymoon Ranch Rd.
 Marble Falls, TX 78654
 830/598-2258

 **J. Mac Weil**
 254-495-3386
 macweil@yahoo.com
Jon Weil
 225-324-0770
 P.O. Box 91 • Irene, TX 76650

SCHMIDT HEREFORDS
RANGE RAISED CATTLE SINCE 1965
 JD, Robert & Larry Schmidt
 (830) 931-5451 ■ (830) 444-9564
 located 13 miles south of Hondo off Hwy. 173

H S CATTLE
 Harrison 254-223-0110
 Karen Smith 254-216-0167
 harrisonsmith@yahoo.com
 2655 FM 107 • Gatesville, TX 76528

WEINHEIMER RANCH, INC.
 Est. 1878
 Ray E. Weinheimer P.O. Box 327 | Stanswell, TX (830) 644-2226
Len Weinheimer (830) 889-2026 **Cord Weinheimer** (830) 456-3149

SEXTON CATTLE COMPANY
 Est. 1983 Gonzales Co.
Dwight Sexton • Mobile 830-203-0168
 sextoncattle@icloud.com
 9528 W. St. Hwy. 97 • Cost, TX 78614

Jackson Hereford Ranch
 6481 Stephens CR 105
 Ranger, Texas 76470
 Robert & Dena • (254) 647-3671
 Fax (254) 647-3622
 denajackson@agristar.net
 Ranch located 15 miles north of Ranger on FM 207

Zoeller Family Herefords
 Gatesville, Texas
 Horned & Polled Bulls | Show Heifers & Steers
 Lyle & Dona Zoeller (254)-223-4517
 Cattie Zoeller (254)-223-4518
 Zach & Kendall Zoeller (254)-223-4518
 Email: zoellerfamilyherefords@gmail.com

Smith Herefords
 Horned Herefords Since 1904
 George West, Texas
 Charles Smith H 361-449-2510 C 361-362-3429
 Ward Smith 830-255-9788

"Stressing Excellence In Polled Herefords"
Larsons' Polled Herefords
 Ken and Carolyn Larson, Owners
 972-223-6450 Office • 972-223-8955 Home
 254-435-8063 Ranch Office • 972-230-0629 Fax
Lee Larson, executive mgr • 972-824-5869 Cell
 2793 F.M. 1991 • Cilton, Texas 76634
 www.larsonspolledherefords.com • PlunLRanch@aol.com

Why are YOU not advertising?

WESLEY THEURET
 Res./Ranch: 830-583-3365
 Cell: 210-315-0103
 2348 CR 165 • Kenedy, TX 78119-5101
 theuret@sbcglobal.net

McINNIS CATTLE COMPANY
 Est. 1896
 Jessica McInnis 325-642-6755 cell
 Ben McInnis 325-647-4159 cell
 e-mail: mcinniscattle@hotmail.com
 14200 Highway 183 N. • May, TX 76857

Contact the Hereford Cals
 for all your Texas Hereford needs!

TEXAS HEREFORD


Diane Johnson, Manager/Editor 817.831.3161
 email: texashereford@sbcglobal.net
 Missy Coffelt, Sales Rep. 682.309.7555
 email: texashereford4609@gmail.com
 website: www.TexasHereford.org

MW HEREFORD RANCH
 Steve & Elizabeth Chambers
 325/642-9370
 11967 FM 45 • Richland Springs, TX 76871
 "Top Quality Herefords" "Home of Pathfinder"

COMMERCIAL

Carl Herrmann
(C) 979-820-5349
Hank Herrmann
(C) 979-820-5277
Sale Every Wednesday • 1PM
HAULING AVAILABLE
Sale Barn: 979-567-4119
P.O. Box 542 • Caldwell, TX 77836



ALDWELL LIVESTOCK COMMISSION

913-440-5136
JUSTIN B. STOUT
AUCTION SERVICE
Making your program stronger - one sale at a time!



1308 WOODWARD ST
OVERLAND PARK, KS 66205

OKLAHOMA/NEW MEXICO

H B & H Herefords
Phil Harvey, Jr.
575-524-9016
Cell 575-644-6925
P.O. Box 40
Mesilla, NM 88045
PhilHarveyjr@comcast.net

Jim Bob Burnett
Cell 575-365-8291
205 E. Cottonwood Rd.
Lake Arthur, NM 88253
burnettjimbob@gmail.com
bhherefords.com

LEO CASAS, III
Off: 361-362-COWS • Fax 361-362-1035
Cell: 361-362-5863
casascattle@hotmail.com
171 Fairway Ridge • Beeville, TX 78102

LEE TERRELL
REAL ESTATE
Farms • Ranches
Commercial • Property Evaluations
(903) 868-2505 • Res. (903) 893-2289
cell (903) 815-1299
2404 San Miguel • Sherman, TX 75092

BUCK Jiri, Brenda & Bailey Buck
cattle co. Cell 580.795.4865
jiri@buckcattle.com
Jiri Buck & Family
Madill, OK 73446 Matt Scasta
www.buckcattle.com 580.220.7288

Michael Hampton
Regional Sales Manager
For information, call
1-817-487-5138 or visit our
website: www.altoisdgr.com
www.centralflifecontrol.com
www.starbarproducts.com
314 CR 4760, Wrensboro, TX 75494 • mhampton@central.com



CENTRAL LIFE SCIENCES

D-Debter Hereford Farms
Glynn Debter (205) 429-2040
Perry Debter (205) 429-4415
Fax (205) 429-3553
4134 Co. Hwy. 30 • Horton, AL 35980

Copeland Herefords www.copelandherefords.com
Cliff Copeland • 575.403.8123
Matt Copeland • 580.336.8284
850 Romero Rd • Nara Visa, New Mexico




gene source
Dave & Becky Allan
979-562-2700
Dave 979-561-7115
Becky 512-750-8367
Drew Schmidt 443-386-5882
14382 FM 103 • Nocona, TX 76255
www.thegenesource.com

1/5 HOFFMAN RANCH
modern, stout, functional
Denny and Dixie Hoffman
530-336-5778
Jason and Kaycee Hoffman
530-604-5096
P.O. Box 287 Thedford, NE 69166
jason@hoffmanranch.com
www.hoffmanranch.com

HCC Harrison Cattle Co.
Leslie & Jan Harrison • Registered Herefords
22551 E. 990 Rd. • Arapaho, OK 73620
Leslie's cell 580 331-8103
Email: harrisoncattle2@icloud.com
www.harrisoncattlecompany.com

Gorman Milling Co., Inc.
Manufacturer of
Red Chain FEEDS
Gorman, TX
(800) 588-2252
REDCHAINFEEDS.COM



HOLDEN HEREFORDS
"The Best in Line 1 Breeding"
Jack and Tresha Holden
3139 Valier Dupuyer Rd. • Valier, MT 59486
406-279-3301
406-279-3300 Ranch • 406-450-1029 Mobile
www.holdenherefords.com



King Herefords Bill King
505-832-4330
505-220-9909
Tommy & Becky Spindle • 505-832-0926
P.O. Box 564 • Stanley, NM 87058
Located 5 miles north of Moriarty on Hwy 41, then 1.5 miles east.

JOHNSON CATTLE MARKETING
Tom Johnson
440 FM 246 • Wortham, TX 76693
cell: 817/291-5121
e-mail: johnsoncattlemarketing@gmail.com
website: www.johnsoncattlemarketing.com

LARGENT and SONS
Hereford Cattle Since 1902
P.O. Box 66 • Kaycee, WY 82639
307-738-2443 or 307-267-3229
Sale Date: November 19, 2020
largentandsons@yahoo.com
www.largentandsons.com

MESSNER HEREFORDS
Milton Messner (580) 837-5384
Van Messner (580) 837-5532
Route 1, Box 350 • Laverne, OK 73838



Midcontinent Livestock Supplements
MLS Forage Enhancing Program
www.mlstubs.com
Kyle Latham
254-715-2162
Valley Mills, TX



NOLLES CATTLE COMPANY REGISTERED HEREFORD CATTLE
www.nollescattleco.com
MIKE, TRUDY & KATIE NOLLES • OFFICE 402.244.5473
MIKE 402.760.3084 • TRUDY 402.760.1948 • KATIE 402.760.1122
86732 454TH AVE. • BASSETT, NEBRASKA 68714

PÉREZ CATTLE COMPANY Michael & Connie PEREZ 575/633-2038
Michael's cell • 575-403-7970
Kyle's cell • 575-403-7971
Drew's cell • 575-403-7115
901 Quay Road 96 • Nara Visa, NM 88430

TROY ROBINETT AUCTIONEER
(817) 995-7509
Robinnett
Auction Services, LLC
TROY@ASLIFE.COM



RMH PRAIRIE MEADOW HEREFORDS
11268 Hobbs Rd. • Rochester, IL 62563
Office (217) 529-8878 • Fax (217) 529-9374
Greg (217) 498-7095



West Star Herefords
BULLS FOR SALE At Private Treaty
Sheldon Wilson • 575/451-7469
cell: 580-651-6000 - leave message



AUCTIONEER • SALE MANAGEMENT
MARKETING AND CONSULTING
SCHACHER AUCTION SERVICES
Robert Schacher 817-219-0102
www.schachersaction.com
LIVESTOCK MORTALITY INSURANCE



Bar-S Mark Stephens • 217-825-7913
704 Virginia Ave., Taylorville, IL 62568
Pete Loehr • 309-692-6026
113 Northgate Rd., Peoria, IL 61614
Farm: 1777 N. 1000 East Rd.
Taylorville, IL 62568
LHF www.stephensandloehrherefords.com



Advertising DEADLINE for the
MARCH issue is February 15th!
Call Missy at 682.309.7555
to place your ad.



- Feb 2:** Fort Worth Stock Show National Hereford Show, Fort Worth TX
- Feb 5-6:** Fort Worth Stock Show, Junior Market Steer Show, Fort Worth, TX
- Feb 7:** South Texas Hereford Association Annual Spring Bull & Female Sale, Beeville, TX
- Feb 7:** Messner Ranch 65th Annual Production Sale, Slapout, OK
- Feb 15:** *Ad deadline for March Texas Hereford Magazine*
- Feb 20:** San Antonio Stock Show, Junior Heifer Show, San Antonio, TX
- Feb 23:** Colyer Herefords 45th Annual Production Sale, Bruneau, ID
- Feb. 24:** Perez Cattle Company Annual Spring Bull Sale, Nara Visa, NM
- Feb 26:** San Antonio Stock Show, Junior Market Hereford Steer Show, San Antonio, TX
- Feb 26:** L Bar W Cattle Co. Annual Production Sale, Absarokee, MT
- Mar 3-4:** Houston Livestock Show, Hereford Show, Houston, TX
- Mar 7:** Doyle Hereford Ranch Spring Bull & Female Sale, Wolfe City, TX
- Mar 10:** Cooper Hereford Ranch Annual Production Sale, Willow Creek, MT
- Mar 13:** Houston Livestock Show, Junior Heifer Show, Houston, TX
- Mar 15:** *Ad deadline for April Texas Hereford Magazine*
- Mar 17:** Flying S Herefords Annual Line One Production Sale, Paluxy, TX
- Mar 19:** GKB Cattle & Barber Ranch 4th Annual Spring Bull Sale, Desdemona, TX
- Mar 19:** Houston Livestock Show, Junior Market Steer Show, Houston TX
- Mar 24:** Harrison Cattle Co. Annual Production Sale, Arapaho, OK
- Mar 26-29:** BOLD (Building on Leadership Development) Conference @ GKB Hi-Point Ranch, Desdemona, Texas
- Mar 27-29:** TSCRA Cattle Raisers Convention and Expo, Fort Worth, TX
- Mar 30:** Copeland and Sons Annual Demand the Brand Bull Sale, Clayton, NM
- Apr 1:** Texas Junior Hereford State Show entries open online
- Apr 10:** W4 Ranch Spring Production Sale, Morgan, TX
- Apr 15:** *Ad deadline for May Texas Hereford Magazine*
- Apr 28-29:** Hemphill County Beef Cattle Conference, Canadian, TX
- May 15:** Texas Junior Hereford State Show entries close and late entries begin
- May 15:** Junior National Hereford Expo early bird entry deadline
- May 15:** *Ad deadline for June/July Texas Hereford magazine* (directory/bull edition)

(continued from page 6)

Hi from Lady Di



the Stock Show). My street, lined with trees, received a heavy layer of sleet, and my driveway—set at a 20-degree incline—was completely covered with rock-hard ice. There was simply no way for me to clear it to reach my car, which I

had wisely parked across the street on my neighbor's flat driveway. But, as of this writing, I'm five days on house arrest.

During this event, my neighbor texted to say she wanted to bring something over. My first thought was, "No, you won't make it up the driveway!" Sure enough, by the time I got to



DISPLAY ADVERTISERS

BARBER RANCH	IFC
BIG DADDY CLUB CALVES	18
BLACK HEREFORD RANCH	19
CENTRAL LIFE SCIENCES	28
CLARK FAMILY CLUB CALVES	18
CLAYTON CATTLE CO.	18
COLYER HEREFORDS	7
COOPER HEREFORD RANCH	4
COPELAND & SONS HEREFORDS	15
COX CATTLE CO.	20, 21
COX CONCRETE PRODUCTS	31
DOYLE HEREFORD RANCH	5
DUDLEY BROS.	BC
ESF HEREFORDS	12
GKB CATTLE	IFC
GRUBEN CATTLE CO.	10
HALE CATTLE CO.	12
KG CATTLE	18
LARGENT & SONS	IBC
McCLINTOCK HEREFORDS	10
O H TRIANGLE RANCH	8, 9
PATSCHKE LAND & CATTLE	25
PEREZ CATTLE CO.	11
RAGLAND HEREFORDS	25
ROCKING CHAIR RANCH	1
SANDHILLS HEREFORD SHOW	26, 27
SEXTON CATTLE CO.	12
SCHMIDT HEREFORD RANCH	6
STILL RIVER RANCH	25
W4 RANCH	3
WEIL CATTLE CO.	17
ZOELLER FAMILY HEREFORDS	25

the door, there was a container of chicken tortilla soup and homemade tortillas waiting for me. I carefully stepped out to grab it while it was still warm.

Curious, I immediately called her to thank her and ask how she managed to make it up my icy driveway. She laughed and said, "Well, I had to take my shoes and socks off to go up." I asked, "Then how did you get back down?" Her answer: "I sat on my butt and slid down to the street!"

Now that's dedication. (Oh, and the soup was delightful.)

It's Time!



Sale Date!

November 19, 2026

**This AI season could be your best ever!
Using the bulls listed below represent lead time for you!**

L3 MC ROCKET FUEL 263 #44382698

Owned with McMurry Herefords, MT.

CE	BW	VW	YW	DMI	SC	SCF	MM	MG	MCE	MCW	UDDR	TEAT	CW	FAT	REA	MARB	BMI	BII	CHB
4.8	2.6	77	114	1.2	1.1	24.4	33	72	3.3	97	1.20	1.20	99	0.024	1.15	0.80	534	674	203

L3 B413 DESERT VALUE 219 #44382649

Owned with Jill Hodgekiss, SD.

CE	BW	VW	YW	DMI	SC	SCF	MM	MG	MCE	MCW	UDDR	TEAT	CW	FAT	REA	MARB	BMI	BII	CHB
4.8	2.7	66	102	0.6	1.1	23.2	33	66	4.0	80	1.20	1.20	87	0.064	0.83	0.67	501	623	185

L3 DESERT GALAXY 538 #44653650

Semen Available in the Spring.

CE	BW	VW	YW	DMI	SC	SCF	MM	MG	MCE	MCW	UDDR	TEAT	CW	FAT	REA	MARB	BMI	BII	CHB
7.7	1.3	62	98	0.8	1.2	24.9	38	69	7.9	74	1.10	1.30	80	0.104	0.67	0.63	505	623	163

KL ROCKET FUEL 550 #44653768

Semen Available in the Spring. Owned with Jack Chastain, TX.

CE	BW	VW	YW	DMI	SC	SCF	MM	MG	MCE	MCW	UDDR	TEAT	CW	FAT	REA	MARB	BMI	BII	CHB
6.2	3.0	68	103	1.1	0.9	23.8	39	73	4.8	89	1.10	1.10	98	0.034	0.91	0.76	518	648	198

DESERT CS STANDFIELD 544 #44653755

Semen Available in the Spring.

CE	BW	VW	YW	DMI	SC	SCF	MM	MG	MCE	MCW	UDDR	TEAT	CW	FAT	REA	MARB	BMI	BII	CHB
6.6	3.3	73	115	1.2	2.0	29.7	40	77	8.5	74	1.30	1.40	81	0.034	0.70	0.31	554	664	132

LARGENT AND SONS

HEREFORD CATTLE SINCE 1902

Mark & Cathy 307-738-2443 | Mark's cell 307-267-3229 | Dave 307-267-4491 | Toby 307-267-1997 | Laura 307-267-6786
largentandsons@yahoo.com | website: www.largentandsons.com | P.O. Box 66, Kaycee, WY 82639 | 10 miles south on I-25

Visitors Always Welcome



65th Annual
BULL SALE
THURSDAY, OCTOBER 1, 2026



DUDLEY BROS.

Box 10 • Comanche, Texas 76442

John: 325-642-0745 • Tom: 325-642-0748

Office: 325-356-2284 • Email: John@dudleybros.com

www.dudleybros.com